



## Kernel for Lotus Notes to Outlook

“Convert Unlimited .NSF Files to .PST Files Efficiently”

### PRODUCT GUIDE

# Table of Contents

---

1.	Introduction to Kernel for Lotus Notes to Outlook.....	5
1.1	Using this Manual .....	5
1.2	About Kernel for Lotus Notes to Outlook.....	6
1.3	Salient Features .....	6
1.4	Who Should Use this Software? .....	6
2.	Getting Started .....	8
2.1	Installation Pre-requisites.....	8
2.2	Downloading Kernel for Lotus Notes to Outlook for the First Time.....	9
2.3	Install Kernel for Lotus Notes to Outlook.....	9
2.4	Start Kernel for Lotus Notes to Outlook.....	10
2.5	Uninstall Kernel for Lotus Notes to Outlook.....	10
3.	Software Interface .....	11
3.1	Menu-bar.....	11
3.2	Tool-bar.....	12
3.3	Status Bar .....	13
3.4	Buttons Used.....	13
3.5	Customize User Interface.....	14
4.	Convert NSF file to PST file.....	15
5.	Convert Lotus Domino Server Mailboxes .....	20
6.	Full Version .....	27
6.1	Requirement of Full Version.....	27
6.2	Purchasing Full Version.....	27
7.	Support.....	28
8.	Troubleshooting .....	29
8.1	Common Issues .....	29
8.2	Frequently Asked Questions .....	29
9.	Legal Notices .....	30
9.1	Copyright .....	30
9.2	Trademark.....	30

9.3 Disclaimer ..... 30

9.4 License Agreement ..... 30

# Table of Figures

---

Figure 3.1: File Menu .....	11
Figure 3.2: Tools Menu.....	11
Figure 3.3: Help Menu .....	12
Figure 3.4: Status Bar .....	13
Figure 4.1: Main Window .....	15
Figure 4.2: List of .NSF files .....	16
Figure 4.3: Preview .....	17
Figure 4.4: Save Options.....	18
Figure 4.5: File Location window .....	18
Figure 4.6: Saving Format options.....	19
Figure 5.1: Domino Server File Selection window.....	20
Figure 5.2: Window asking for ID file password.....	21
Figure 5.3: Selecting NSF files .....	22
Figure 5.4: NSF files listed .....	23
Figure 5.5: Save Options.....	23
Figure 5.6: Exchange Server Information window .....	24
Figure 5.7: Server connecting .....	25
Figure 5.8: Saving Process.....	26

# 1. Introduction to Kernel for Lotus Notes to Outlook

---

Welcome to the user manual for **Kernel for Lotus Notes to Outlook software**, the most powerful, professional and easy to use conversion software that helps you to convert unlimited NSF files and Lotus Domino Server Mailboxes.

## 1.1 Using this Manual

---

This user manual is intended to guide users on using Kernel for Lotus Notes to Outlook. We suggest that first time users should read this user manual completely and carefully before proceeding to use the software. However, if you are an experienced user, you can use the table of contents to find out information pertaining to the tasks that you need to perform by using Kernel for Lotus Notes to Outlook.

You can use the table of contents to navigate through different sections of this user manual. The table of contents lists all the sections that are contained in this user manual in chronological order. The user manual comprises the following sections:

- Introduction
- Getting Started
- Software Interface
- Convert NSF file to PST file
- Convert Domino Server Mailboxes
- Full Version
- Support
- Troubleshooting
- Legal Notices

Certain abbreviations have been used throughout this manual. For clear understanding of the contents of this user manual, please go through the list of abbreviations, mentioned below, before reading the manual.

### 1.1.1 List of Abbreviations

NSF: Notes System Files

PST: Personal Storage Files

RTF: Rich Text Format

MS: Microsoft

RAM: Random Access Memory

MB: Mega-Byte

GB: Giga-Byte

## 1.2 About Kernel for Lotus Notes to Outlook

---

Kernel for Lotus Notes to Outlook software is an email migration tool for Lotus Notes email client. This software uses quick algorithm to convert NSF files to PST files and user mailboxes from Domino Server to Exchange Server.

Kernel for NSF to PST accurately converts emails, contacts, and calendar items, sent items, notes, alarms, tasks, appointments, address books, journals and Unicode characters. Software is equipped with the option of saving converted NSF files into .PST or Exchange Server format. It is a great tool for converting unlimited .NSF files to .PST files and supports direct migration from Lotus Domino Server to MS Exchange Server.

## 1.3 Salient Features

---

Salient features of Kernel for Lotus Notes to Outlook include:

- Accurate NSF file to PST file conversion
- Converts unlimited .NSF file(s) to .PST/Exchange
- Migration from Lotus Domino Server to MS Exchange Server
- Direct access to Lotus Domino Server for migration
- Direct access to MS Exchange Server
- Unicode Character Conversion
- Recreates folder structure of .NSF file into .PST file and makes it easy to access with MS Outlook email client
- Option to save converted NSF file into .PST and Exchange Server format
- Option to save and view converted file in Text or RTF format
- Converts emails, attachments, images, notes, journals, appointments, tasks, schedules, to-do item list, sent emails, drafts, alarms, rules, calendar, address book, folder and sub-folders
- Supports Every Version of Lotus Domino Server, Lotus Notes, MS Outlook and MS Exchange Server.
- Free demo to analyze capabilities of the tool before purchasing it, allowing saving of first 10 items of every folder existing in the NSF file

## 1.4 Who Should Use this Software?

---

Kernel for Lotus Notes to Outlook is an excellent tool indeed for system administrators, individuals, technicians, who need to migrate from Lotus Domino Server environment to MS Exchange Server environment or want to convert large NSF files from Lotus Domino Server to MS Exchange Server or MS Outlook. Performing migration is a bit tedious task but with Kernel for Lotus Notes to Outlook, companies, organizations, individuals can feel relaxed.

## 2. Getting Started

---

Now that you have understood the features and potential of Kernel for Lotus Notes to Outlook, you are ready to get hands on experience of the software. To start migrating from Notes to MS Outlook, you will first need to download and install the software.

It is strongly recommended that before installing Kernel for Lotus Notes to Outlook, you should go through the installation pre-requisites for the software to ensure that your computer is appropriately configured to run the software.

### 2.1 Installation Pre-requisites


---

The various pre-requisites for installing and running Kernel for Lotus Notes to Outlook can be broadly classified into two major categories – Hardware requirements and Software requirements.

#### 2.1.1 Hardware Requirements:

The hardware requirements for installing the software are as follows:

- Pentium Class Processor
- Minimum 64MB RAM (128 MB recommended)
- 10MB for Software installation
- Disk Space - Enough space to store the converted PST files

 You should have at-least 10 MB of free disk space if you want to save 10 MB of converted data.

#### 2.1.2 Software Requirements:

The software requirements for installing the software are as follows:

##### 2.1.2.1 Operating System Requirements

Supported operating systems:

- Windows Vista
- Windows XP
- Windows 2003
- Windows 2000
- Windows 98

### 2.1.2.2 Lotus Notes & Domino Server Version Requirements

Supported Lotus Notes & Domino Server versions:

- Lotus Notes 8.0, 7.0, 6.0
- Domino Server versions: 8.0, 7.0, 6.0

### 2.1.2.3 MS Outlook Version Requirements


Supported MS Outlook versions:

- MS Outlook 97 and above (97, 98, 2000, 2002, 2003, 2007)

### 2.1.2.4 MS Exchange Server Version Requirements

Supported MS Exchange Server versions:

- All versions of MS Exchange Server

 MS Outlook and Lotus Notes should be installed on the system on which you are performing the conversion.


## 2.2 Downloading Kernel for Lotus Notes to Outlook for the First Time

---

After checking your computer with the prescribed system requirements for Kernel for Lotus Notes to Outlook, you can download and install the software on your computer. You can buy the full version of the software from any one of our authorized resellers – Element5, Asknet and 2CO.

If you want to try using Kernel for Lotus Notes to Outlook before buying it, you can download the evaluation version from the following link:

<http://www.nucleustechnologies.com/download-convert-nsf-to-pst.php>

 You can save the first 10 items of every folder existing in the .NSF file to PST file format using the evaluation version of Kernel for Lotus Notes to Outlook; however, to save the entire converted items you need to purchase the Full Version.

## 2.3 Install Kernel for Lotus Notes to Outlook

---

After downloading the installer file for Kernel for Lotus Notes to Outlook, you can install the software by running the file. To install Kernel for Lotus Notes to Outlook:

1. Double-click the Kernel for Lotus Notes to Outlook installer. Follow the on-screen instructions.

The **Setup Installation Complete** screen will be displayed.

2. Click **Finish** to launch the software.

## 2.4 Start Kernel for Lotus Notes to Outlook

---

To start Kernel for Lotus Notes to Outlook:

Click the **Start → All Programs → Kernel for Lotus Notes to Outlook**

Alternatively, you can launch Kernel for Lotus Notes to Outlook by double-clicking the shortcut icon available on the desktop and Quick Launch icon.

## 2.5 Uninstall Kernel for Lotus Notes to Outlook


---

You may need to uninstall and re-install Kernel for Lotus Notes to Outlook. To uninstall Kernel for Lotus Notes to Outlook:

1. Click **Start → All Programs → Kernel for Lotus Notes to Outlook → Uninstall Kernel for Lotus Notes to Outlook**

A warning message will be displayed.

2. Click **'Yes'** to uninstall Kernel for Lotus Notes to Outlook.

 Before proceeding to uninstall Kernel for Lotus Notes to Outlook, you must ensure that the software is not running.

You can alternatively uninstall Kernel for Lotus Notes to Outlook from the **Control Panel** by performing the following steps:

1. Click the **Start Menu → Control Panel** and then double click the **Add or Remove Programs** icon.
2. Select **Kernel for Lotus Notes to Outlook** and click **Remove**.

A warning message will be displayed.

3. Click **Yes** to uninstall Kernel for Lotus Notes to Outlook.

# 3. Software Interface

---

Now that Kernel for Lotus Notes to Outlook has been installed on your computer, you can start using the software after getting acquainted with the software interface.

## 3.1 Menu-bar

---

The menu-bar of Kernel for Lotus Notes to Outlook comprises three main menus – File, Tools, and Help.

### 3.1.1 File Menu

The **File** menu comprises one menu item.

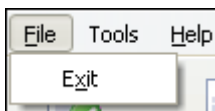


Figure 3.1: File Menu

Menu item in the **File** menu:

Field Name	Field Description
------------	-------------------

Exit	Select to close Kernel for Lotus Notes to Outlook software
------	--

### 3.1.2 Tools Menu

The **Tools** menu comprises one menu item.

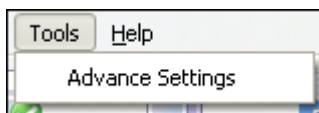


Figure 3.2: Tools Menu

Menu item in the **Tools** menu:

Field Name	Field Description
------------	-------------------

Advance Settings	Select this option to access View Folders which are by default created by Lotus Notes. To view them, you need to activate the 'Show View Folders' option from the Advance Settings window.
------------------	--

### 3.1.3 Help Menu

The **Help** menu comprises three menu items.

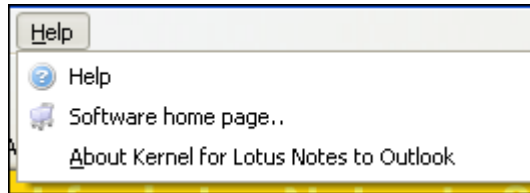




Figure 3.3: Help Menu

Menu items in the **Help** menu:

Field Name	Field Description
Help	Select to view User's Help Manual of Kernel for Lotus Notes to Outlook
Software Homepage	Select to visit software homepage on our website
About Kernel For Lotus Notes to Outlook	Select to view version-related and support information of Kernel for Lotus Notes to Outlook

### 3.2 Tool-bar

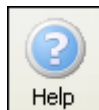
The tool-bar in Kernel for Lotus Notes to Outlook is displayed below the menu-bar. The tool-bar provides a convenient and user-friendly method to perform certain actions. Read the information in the table below to find out about the tool-bar buttons:

Button	Button Name	Button Description
	Add File(s)	Click to add and list .NSF file(s) for conversion
	Add Domino File(s)	Click to get access to <b>Domino Server File Selection</b> window which enables you to get connected to domino server and select .NSF file(s) for conversion



Export

Click to export selected .NSF file to .PST or Exchange Server file format



Help

Click to view User's Guide of Kernel for Lotus Notes to Outlook



Buy Online

Click to view product purchase page of Kernel for Lotus Notes to Outlook

### 3.3 Status Bar

Status bar is displayed at the bottom of the software window. The text 'www.nucleustechnologies.com' is displayed on the status bar when you open the software. The Status bar also displays the text 'CAP', 'NUM', 'SCRL' which respectively correspond to the Caps Lock, Num Lock, and Scroll Lock keys on your keyboard. If any of these keys are pressed, the color of the corresponding text will turn blue/black.




Figure 3.4: Status Bar

### 3.4 Buttons Used

Apart from the standard options available in the menu-bar and the tool-bar, following are the main buttons used throughout the software:


	Click to add .NSF files from your computer
	Click to add .nsf files from Lotus Domino Server user mailboxes by searching for the server and then listing the files
	Click to remove selected NSF file from the list
	Click to remove all the listed NSF files
	Click to preview mail items of NSF database

	Click to export listed NSF file to .PST file or MS exchange server
---	--

## 3.5 Customize User Interface

---

You can add or remove toolbar buttons by clicking:

 → **Add or Remove Buttons** → **Standard** in the toolbar and selecting appropriate buttons.

## 4. Convert NSF file to PST file

Now that you have complete familiarity of the user interface of Kernel for Lotus Notes to Outlook, you are ready to perform migration. To convert .NSF files to .PST files:

1. Launch Kernel for Lotus Notes to Outlook.

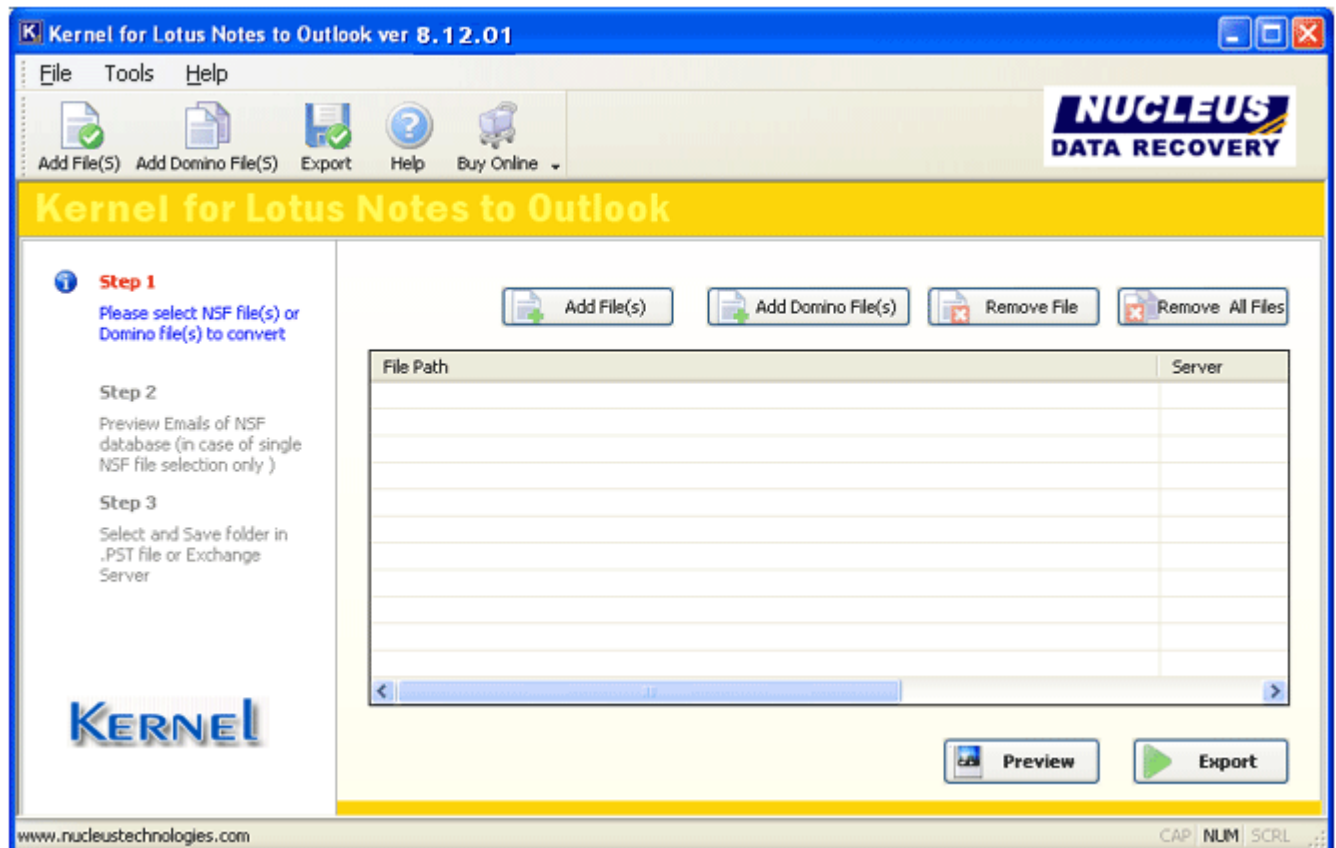


Figure 4.1: Main Window

2. Click the **Add Files(s)** button to browse and list .NSF file(s).

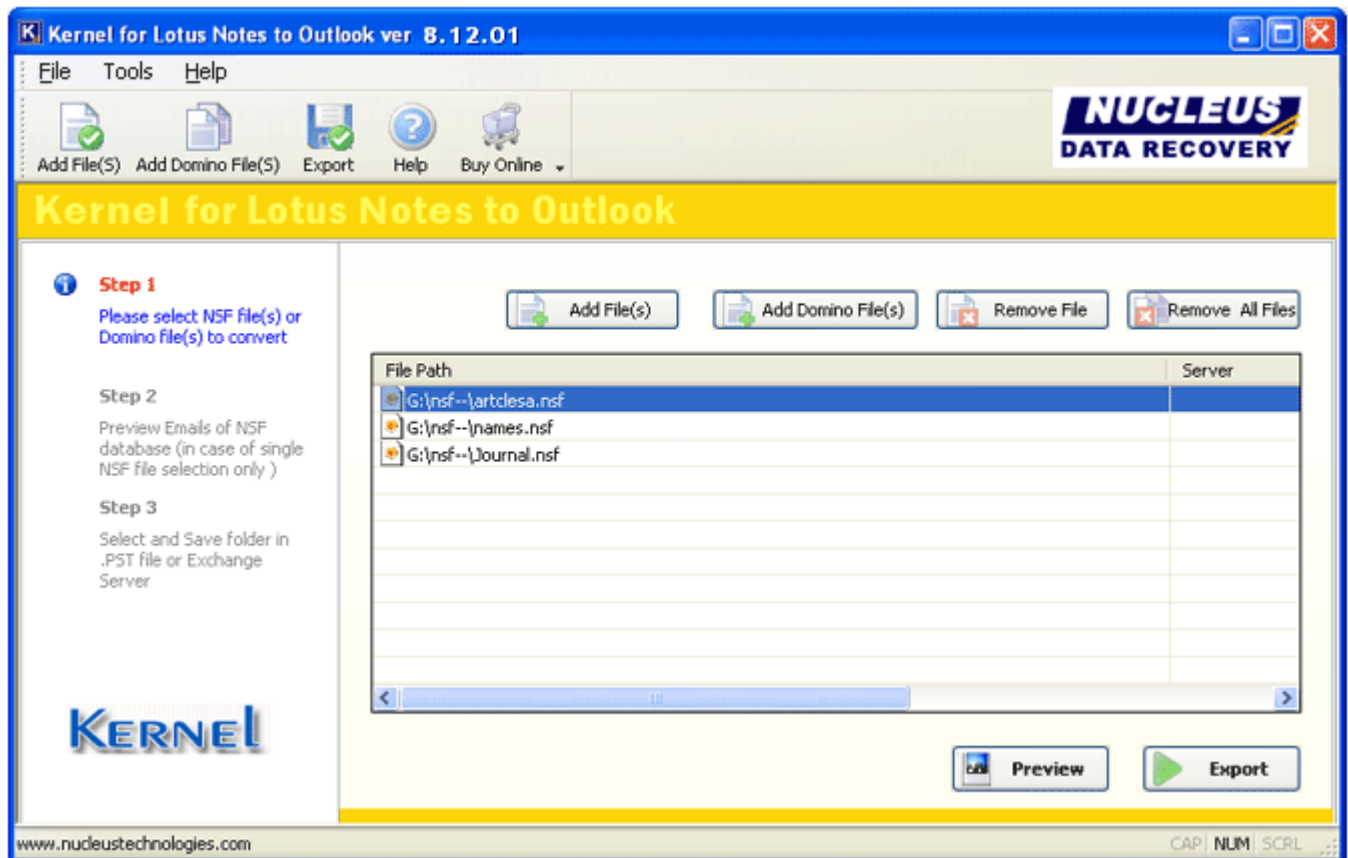


Figure 4.2: List of .NSF files

You can select multiple .NSF files to migrate in one export cycle. You can remove any file from the list by selecting the file from the list and clicking **Remove File**.

3. Select any of .nsf file and Click **Preview** to view the NSF file content.

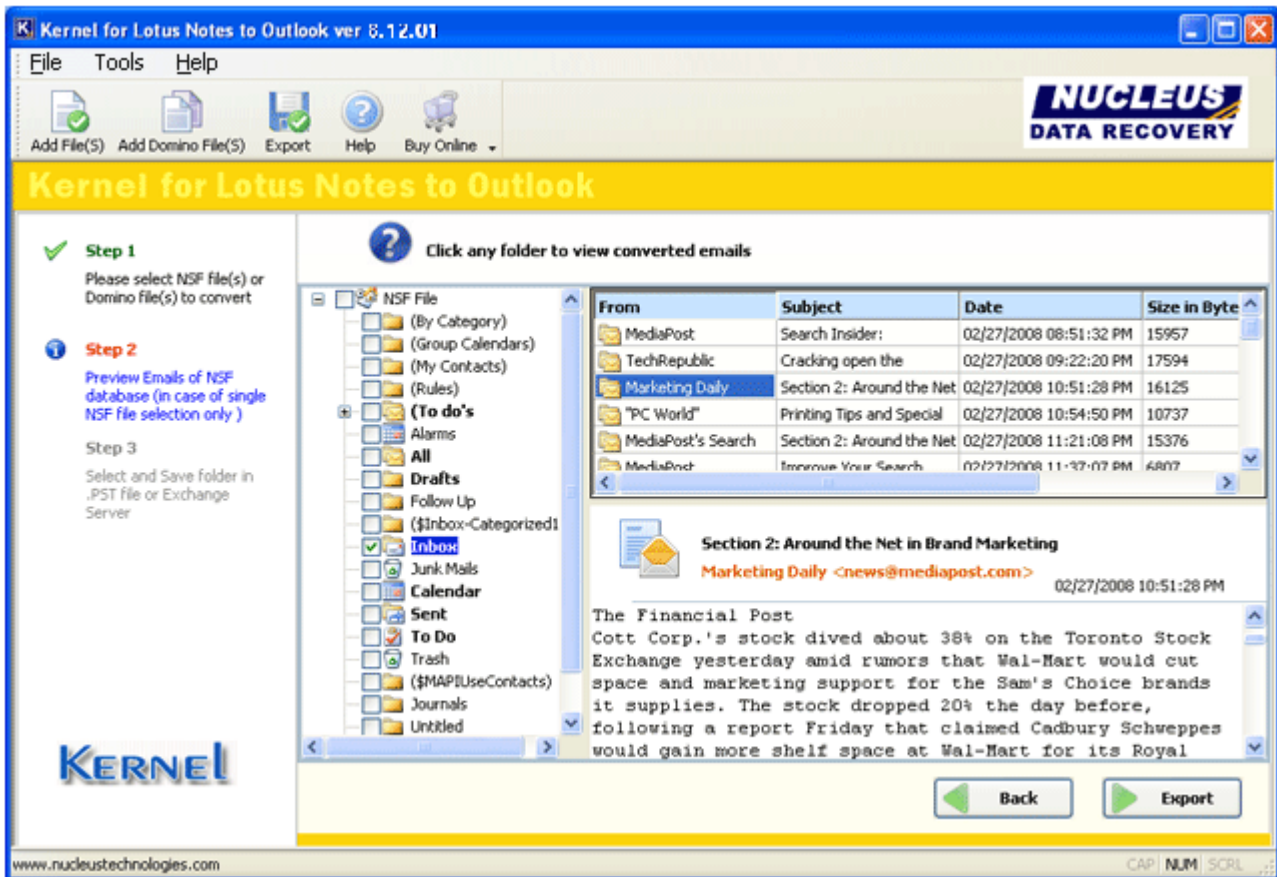


Figure 4.3: Preview

4. Click **Export** after viewing the preview.

As soon as the Kernel for Lotus Notes to Outlook finishes exporting process, it asks you for the saving option:

- **Save in PST**
- **Save in Exchange Server**



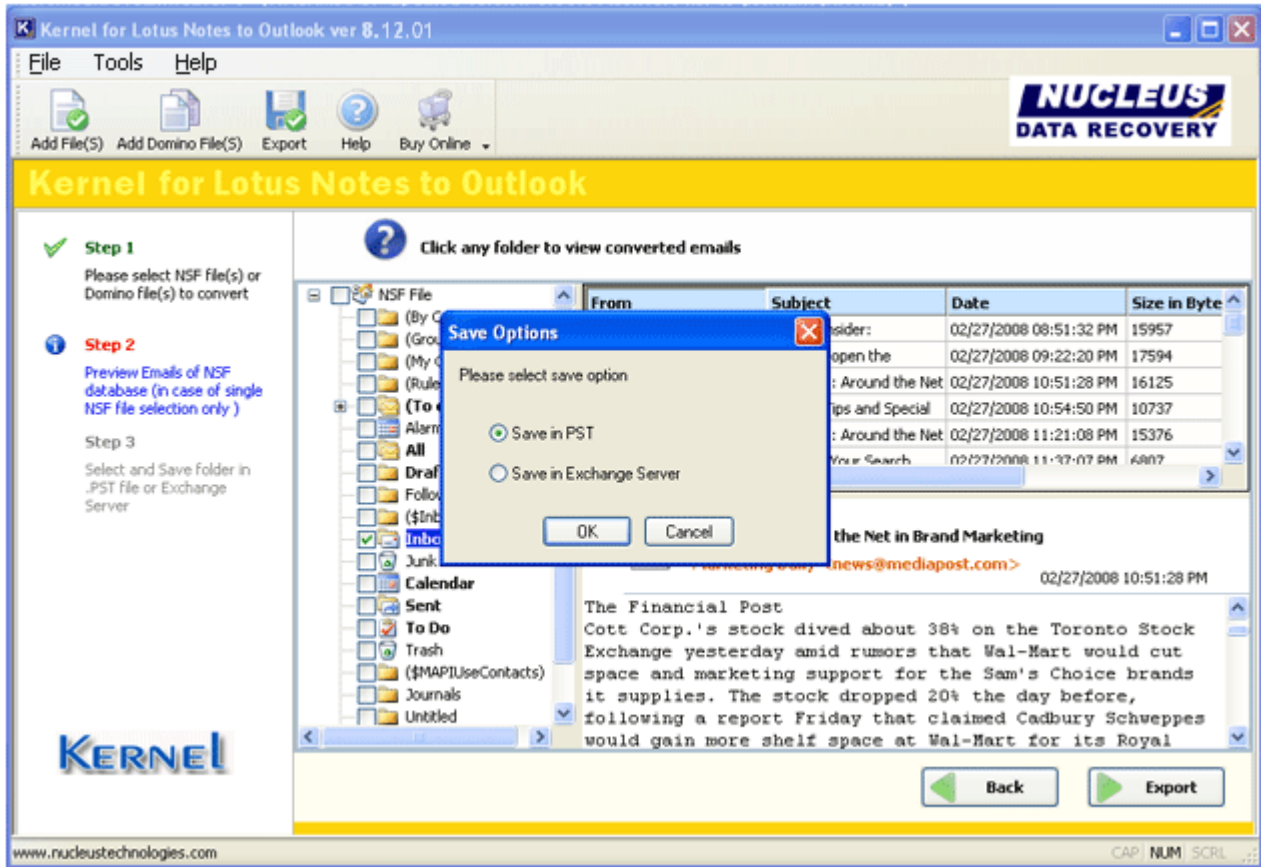


Figure 4.4: Save Options

Here we will consider **Save in PST** option.

- On selecting **Save in PST** option, a window appears asking for PST folder path and PST file name.

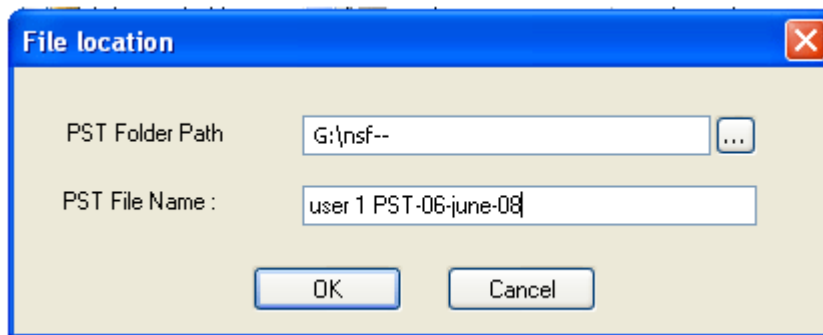
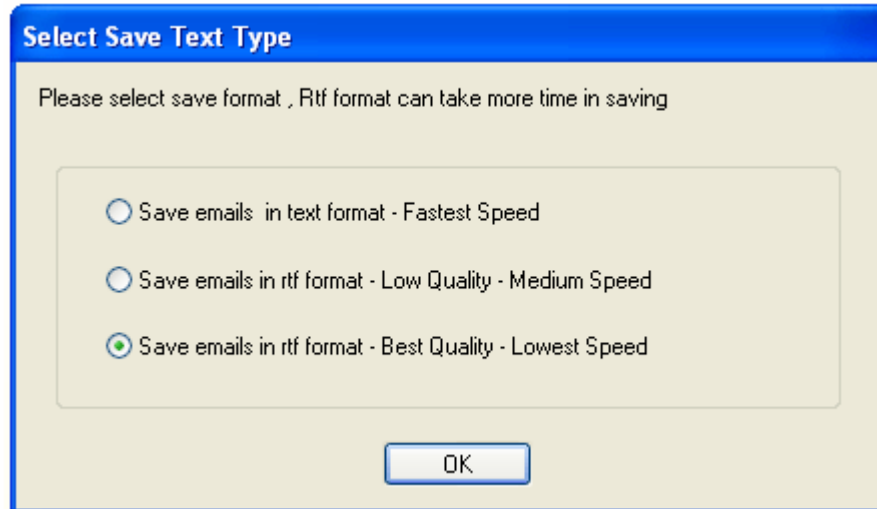



Figure 4.5: File Location window

- On clicking **OK**, software asks for saving format, whether you want to save in text format or RTF format.



**Figure 4.6: Saving Format options**

On successful completion of saving, Kernel for Lotus Notes to Outlook shows a confirmation message.

 Emails and other items of .NSF files are successfully saved into .PST file which now can be viewed with MS Outlook email client.

## 5. Convert Lotus Domino Server Mailboxes

The process is almost same as above.

1. Launch Kernel for Lotus Notes to Outlook. Click **Add Domino File(s)** button.
2. A window named 'Domino Server File Selection' appears which asks for domino server name or IP address.

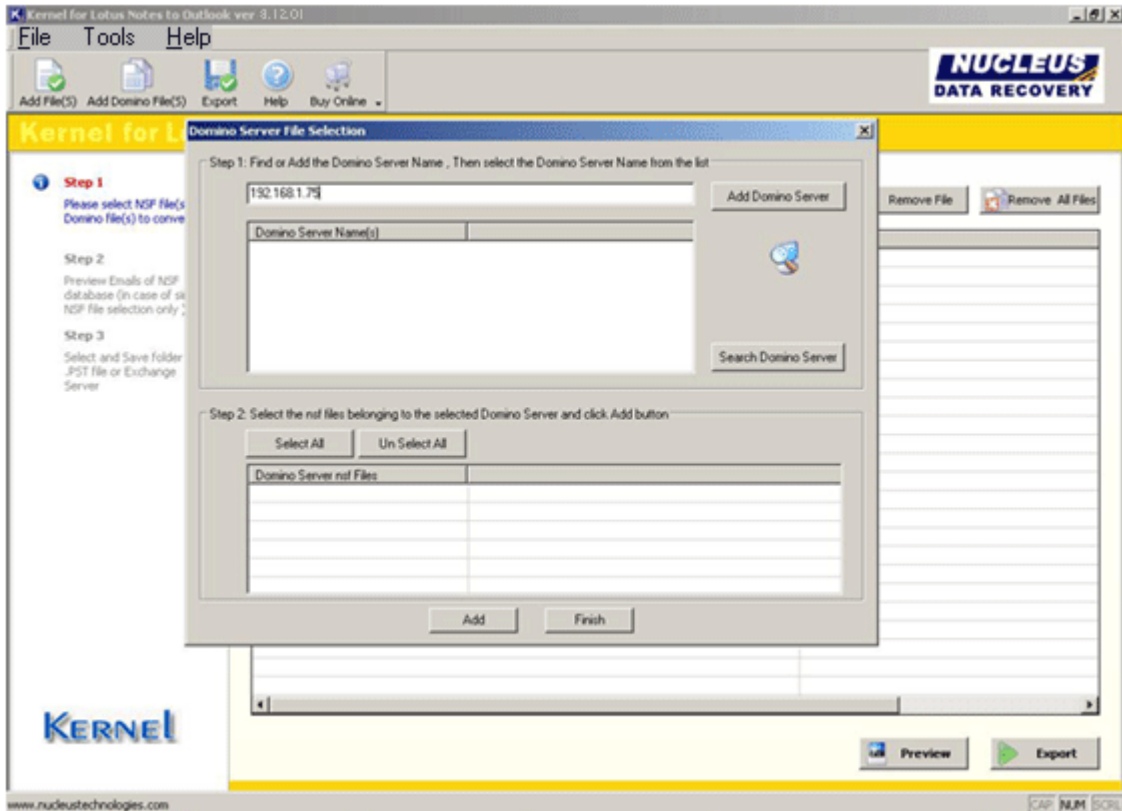


Figure 5.1: Domino Server File Selection window

Define the Domino Server name or IP address in the field or search for the domino server in network with the help of **Search Domino Server** button. Kernel for Lotus Notes to Outlook software will search for the servers if you click the *Search Domino Server* button.

3. As the Kernel software gets connected to the Domino Server, it will ask for the ID file password to obtain access to the server.

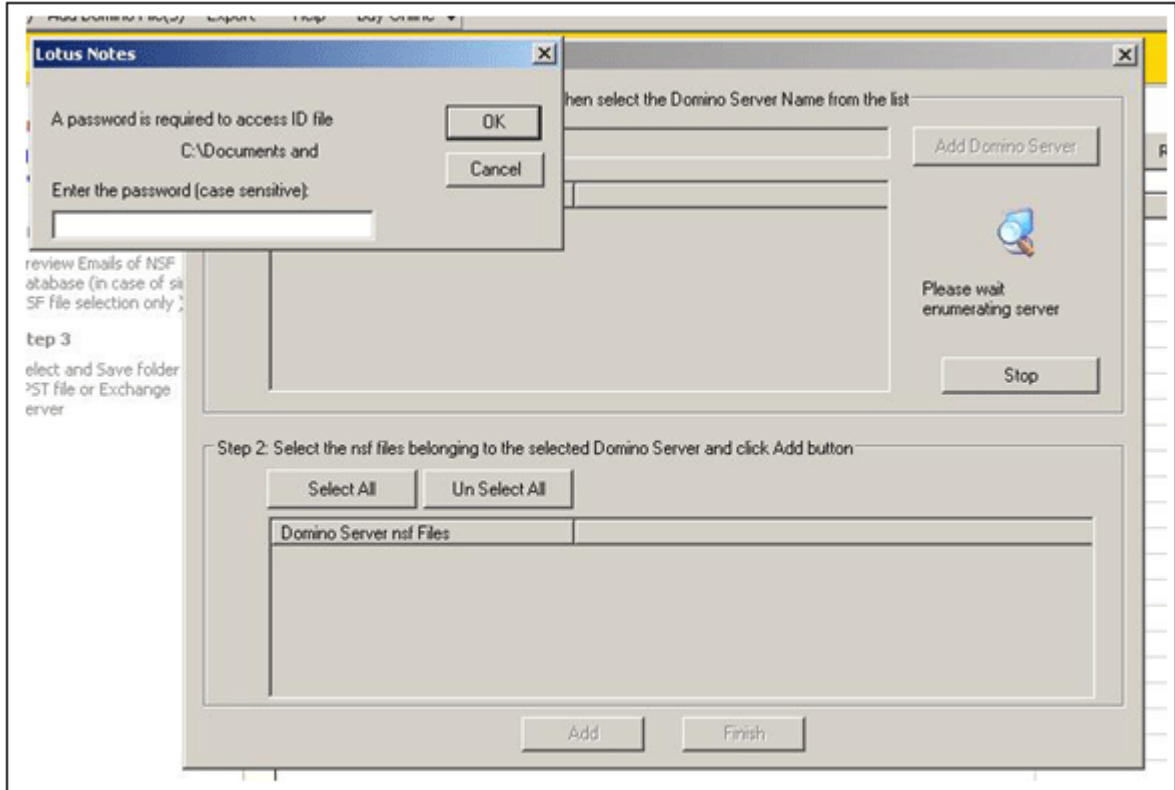


Figure 5.2: Window asking for ID file password

4. Type password and click **OK** button. After that select appropriate .NSF file which is to be converted.

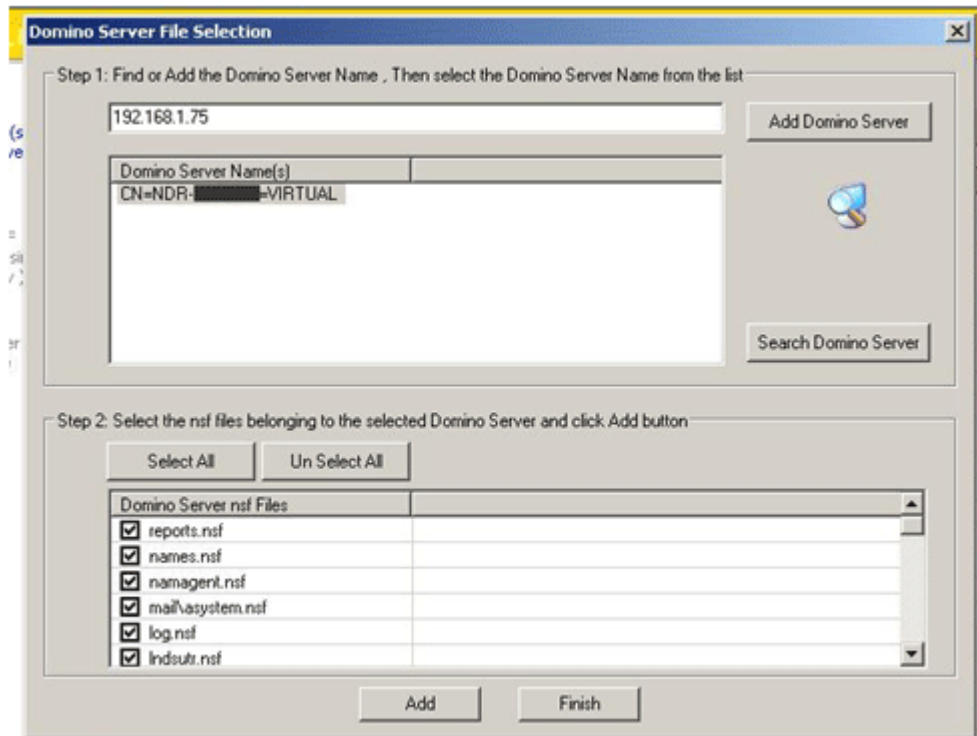


Figure 5.3: Selecting NSF files

5. Click **Add** button to list the files for conversion. A window appears which shows message that **'Selected Files are added'**.
6. Click **OK** and continue with conversion process.
7. Click **Export** button once NSF files get listed.

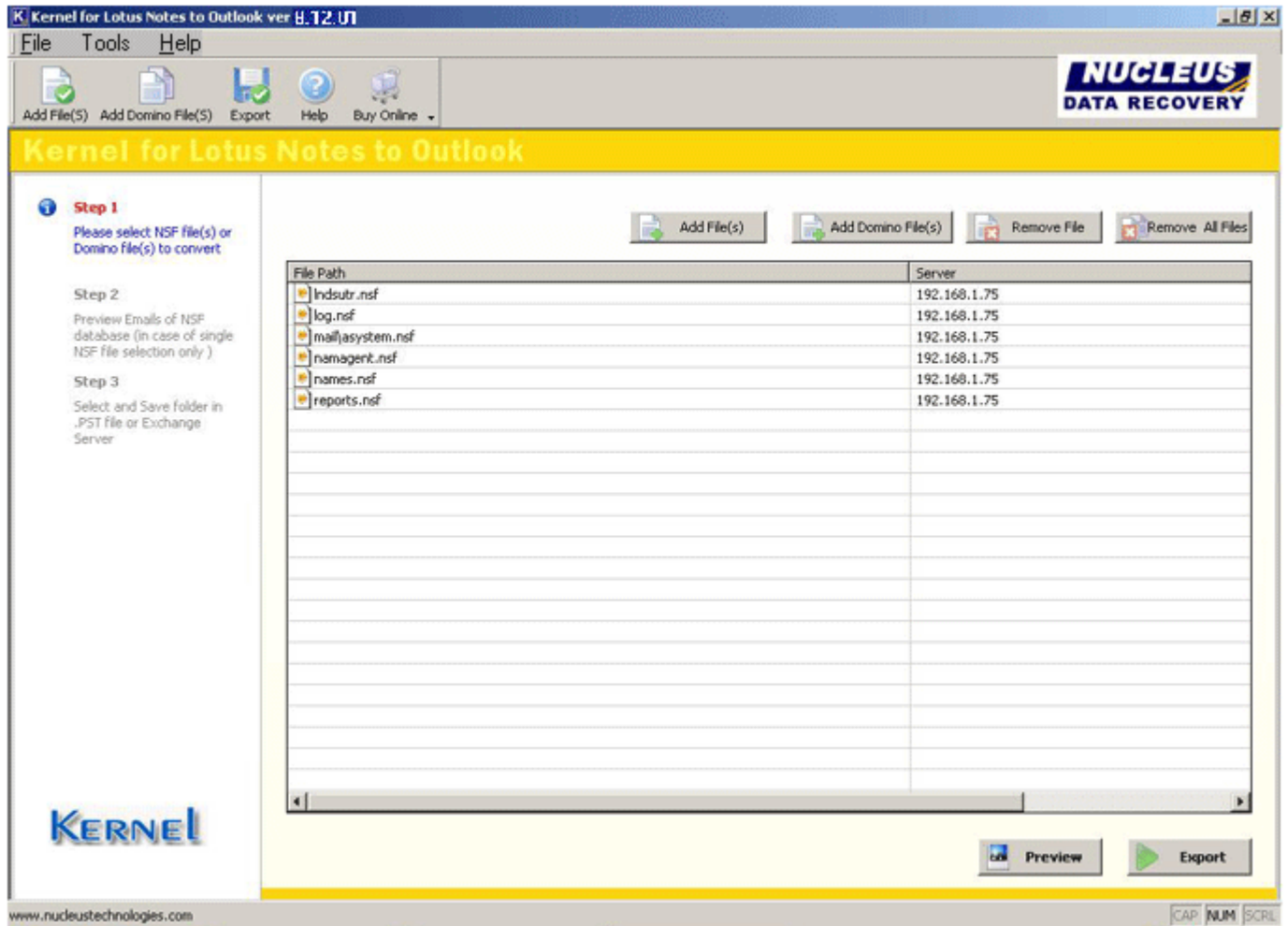


Figure 5.4: NSF files listed

Here you cannot view preview of the files by clicking the **Preview** button.

8. Next step is to choose the saving option: **Save in PST** or **Save in Exchange Server**.

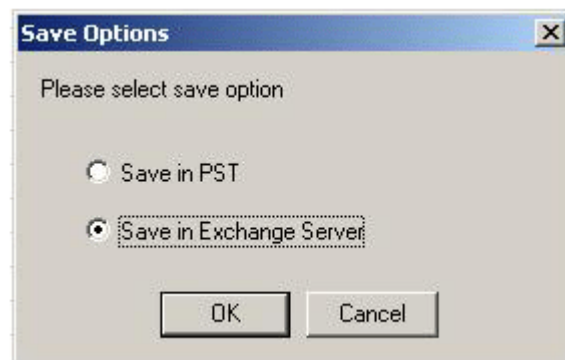

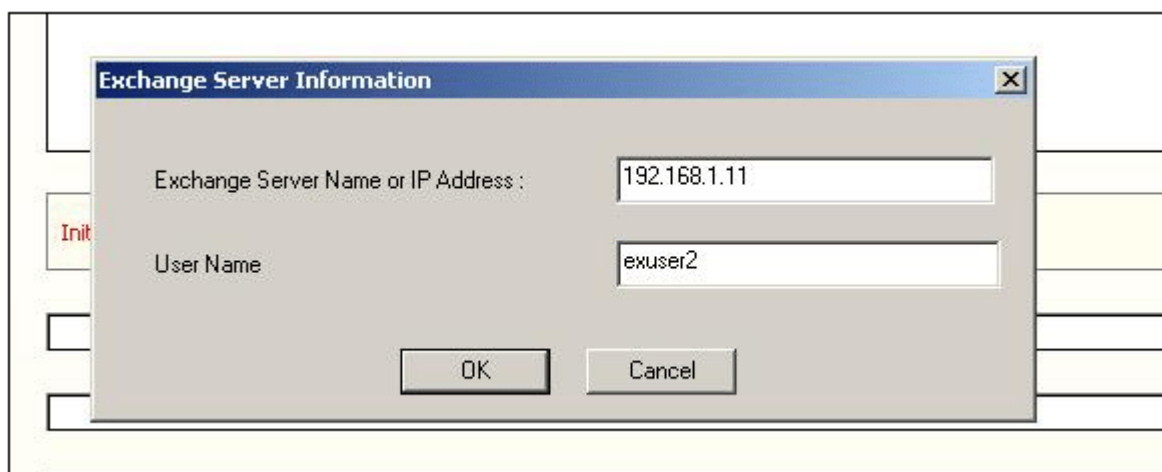


Figure 5.5: Save Options

9. Select **Save in Exchange Server** option and click **OK** button.

 Kernel software will ask you to close every instance of MS Outlook (if running). It is recommended to click **OK** on getting this message.

10. Now the software will create a connection with MS Exchange server. Define exchange server name or IP address along with username to which you want to save email data of NSF file converted to Outlook format.



**Figure 5.6: Exchange Server Information window**

11. Then select the saving format accordingly i.e. save emails in text format, RTF format and click **OK**.
12. Kernel software will then ask password for the user profile you have selected on the MS Exchange Server. Type in the password and click **OK**.

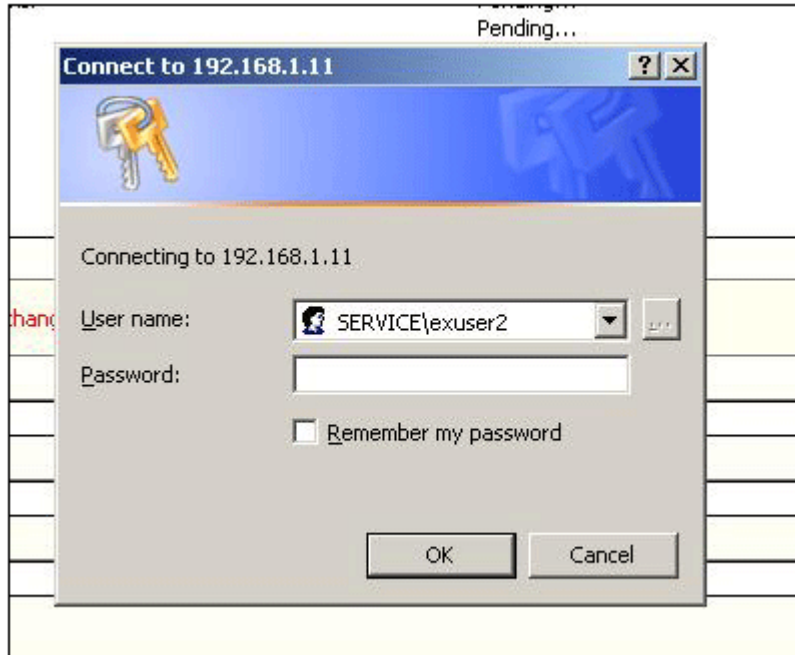


Figure 5.7: Server connecting

13. Now the saving process will start and upon successful saving, Kernel for Lotus Notes to Outlook software will display the message of **Saving Complete**.

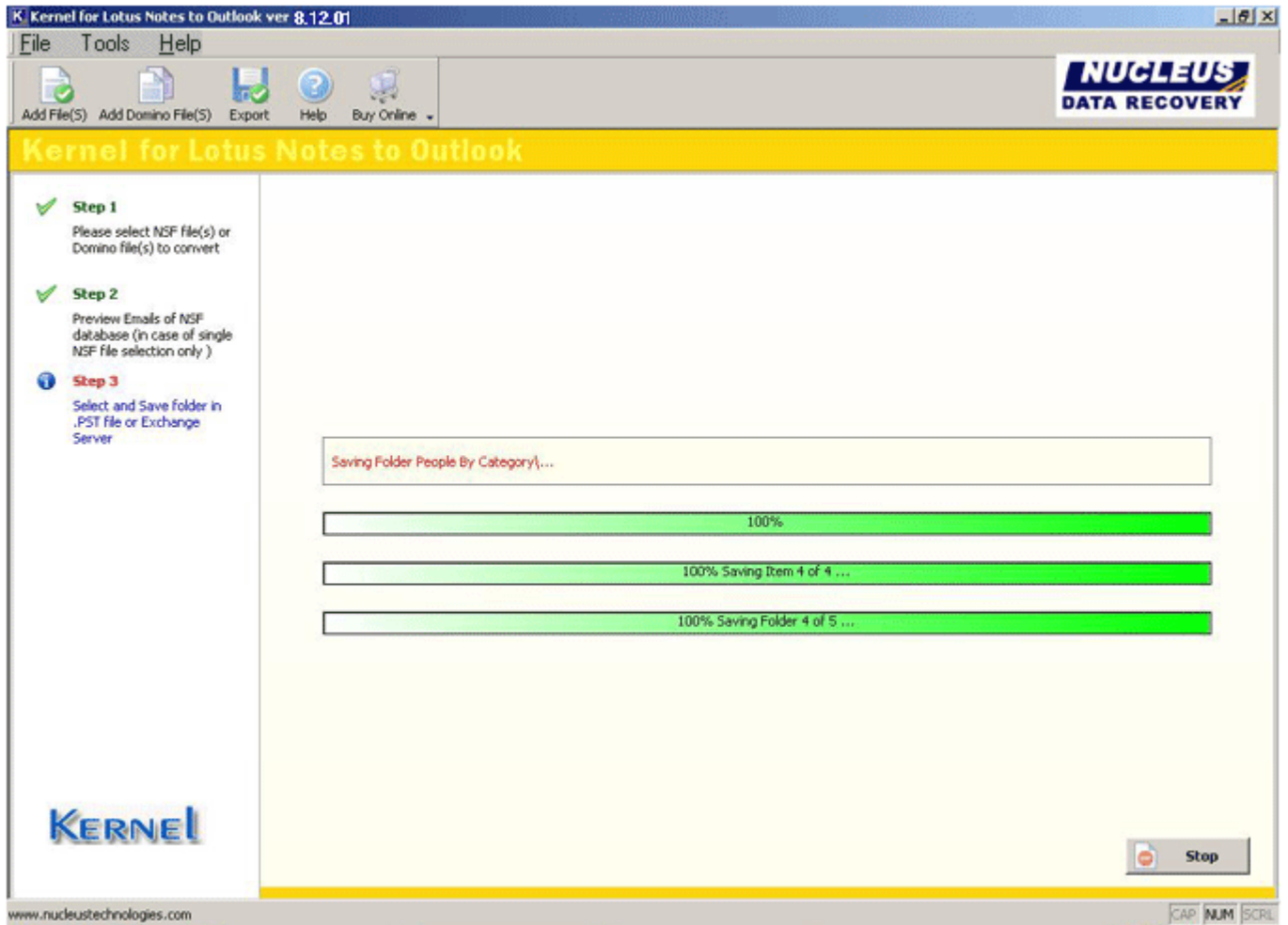


Figure 5.8: Saving Process

## 6. Full Version

---

Although you can use Kernel for Lotus Notes to Outlook evaluation version for free and experience the capabilities of the software, there are certain features that are not available in the evaluation version.

### 6.1 Requirement of Full Version

---

By using the evaluation version of Kernel for Lotus Notes to Outlook, you can only utilize the “Save in PST” option. You can convert only one single NSF file. Only first 10 items per existing folder of NSF file are saved.

You will need to buy the FULL version of the software to enjoy its full featured functions without any above mentioned limitations of evaluation version. **Full** version of the software converts and saves every email item from the NSF file.

### 6.2 Purchasing Full Version

---

You can buy the full version of Kernel for Lotus Notes to Outlook from any one of our authorized resellers – Element5, Asknet and 2CO.

As soon the purchase transaction with our resellers gets completed, our sales team will send you an email comprising the URL to download the full version of Kernel for Lotus Notes to Outlook and activation details of the software.

## 7. Support

---

We have an extensive and efficient support system in place to assist our customers with all issues related to using Kernel for Lotus Notes to Outlook. The software comes with an embedded help manual that can be accessed by clicking **Help → Help** in the menu-bar or by simply clicking **Help** in the tool bar. You can also press the F1 key on the keyboard of your computer to access the embedded help of Kernel for Lotus Notes to Outlook.

You can access the online help for Kernel for Lotus Notes to Outlook at <http://www.nucleustechnologies.com/Online-Helps.html>

View animated working demo of the software at [http://www.nucleustechnologies.com/Animated\\_Demo\\_Single\\_File\\_NSF\\_Conversion.html](http://www.nucleustechnologies.com/Animated_Demo_Single_File_NSF_Conversion.html)

We also have live support wherein you can chat with our software experts at <http://www.nucleustechnologies.com/Support.html>

To talk on phone with our software experts call:

### Help line:

+91-9818725861

1-866-348-7872 (Toll Free for USA/CANADA)

You can also email us about your queries at;

[sales@nucleustechnologies.com](mailto:sales@nucleustechnologies.com) for Sales

[support@nucleustechnologies.com](mailto:support@nucleustechnologies.com) for Support

[contact@nucleustechnologies.com](mailto:contact@nucleustechnologies.com) for General Queries

# 8. Troubleshooting

---

This section deals with your generic and specific queries pertaining to using Kernel for Lotus Notes to Outlook.

## 8.1 Common Issues

---

### Why does Kernel for Lotus Notes to Outlook have limitations in evaluation copy?

The free evaluation version of Kernel for Lotus Notes to Outlook is intended to enable you to experience the capabilities of the software. You will need to buy the software to save all the converted data. **Full** version of the software converts and saves every email item from the NSF file.

## 8.2 Frequently Asked Questions

---

### What are the limitations of Free Evaluation version?

Few of the Kernel Lotus Notes to Outlook software limitations are:

- You can only utilize the "Save in PST" option while saving in free trial version.
- You can only convert single .NSF file and save it in .PST file.
- You can only save 10 emails per existing folder in the .NSF file.

### How to Buy Kernel for Lotus Notes to Outlook?

You can buy Kernel for Lotus Notes to Outlook online at <http://www.nucleustechnologies.com/buy-convert-nsf-to-pst.php>

### I have lost my full version for Kernel for Lotus Notes to Outlook. Can you help me?

Please email us at [sales@nucleustechnologies.com](mailto:sales@nucleustechnologies.com). Please include your name, address, email address, and order confirmation number (if you have it). We will be happy to help you.

## 9. Legal Notices

---

This section comprises the legal specification about Kernel for Lotus Notes to Outlook and the company NUCLEUS DATA RECOVERY.COM PRIVATE LIMITED

### 9.1 Copyright

---

NUCLEUS DATA RECOVERY.COM PRIVATE LIMITED, Nucleus Kernel, accompanied user manual and documentation are copyright of NUCLEUS DATA RECOVERY.COM PRIVATE LIMITED, with all rights reserved under the copyright laws, this user manual cannot be reproduced in any form without the prior written permission of NUCLEUS DATA RECOVERY.COM PRIVATE LIMITED. No Patent Liability is assumed, however, with respect to the use of the information contained herein.

© Nucleus Data Recovery.Com Private Limited. All rights reserved.

### 9.2 Trademark

---

Nucleus Kernel ® is a copyright work of NUCLEUS DATA RECOVERY.COM PRIVATE LIMITED

Windows 95®, Windows 98®, Windows ME®, Windows NT®, Windows 2000 Server®, Windows 2000 Advanced Server®, Windows 2003 Server®, Windows XP®, MS Outlook, MS-DOS, MS Exchange Server and Lotus Notes, Lotus Domino Server are registered trademarks of Microsoft Corporation and IBM.

All other brand and product names are trademarks or registered trademarks of their respective companies.

### 9.3 Disclaimer

---

The Information contained in this manual, including but not limited to any product specifications, is subject to change without notice. NUCLEUS DATA RECOVERY.COM PRIVATE LIMITED provides no warranty with regard to this manual or any other information contained herein and here by expressly disclaims any implied warranties of merchantability or fitness for any particular purpose with regard to any of the foregoing NUCLEUS DATA RECOVERY.COM PRIVATE LIMITED assumes no liability for any damages incurred directly or indirectly from any technical or typographical errors or omissions contained herein or for discrepancies between the product and the manual. In no event shall NUCLEUS DATA RECOVERY.COM PRIVATE LIMITED, be liable for any incidental, consequential special, or exemplary damages, whether based on tort, contract or otherwise, arising out of or in connection with this manual or any other information contained herein or the use there of.

### 9.4 License Agreement

---

Kernel for Lotus Notes to Outlook software is Copyright work of NUCLEUS DATA RECOVERY.COM PRIVATE LIMITED

#### Your Agreement to this License

You should carefully read the following terms and conditions before using, installing or distributing this software, unless you have a different license agreement signed by NUCLEUS DATA RECOVERY.COM PRIVATE LIMITED. The terms and conditions of this License describe the permitted use and users of

each Licensed Copy of Kernel for Lotus Notes to Outlook software. For purposes of this License, if you have a valid license, you have the right to use a single Licensed Copy of Nucleus Kernel.

### **Scope of License**

Each Licensed Copy of Kernel for Lotus Notes to Outlook software may either be used by a single person or used non-simultaneously by multiple people who use the software personally installed on a single workstation. All rights of any kind in Nucleus Kernel, which are not expressly granted in this License, are entirely and exclusively reserved to and by NUCLEUS DATA RECOVERY.COM PRIVATE LIMITED. You may not rent, lease, modify, translate, reverse engineer, decompile, disassemble, or create derivative works based on, Nucleus Kernel, nor permit anyone else to do so. You may not make access to Nucleus Kernel available to others in connection with a service bureau, application service provider, or similar business, nor permit anyone else to do so.

### **Warranty Disclaimers and Liability Limitations**

Kernel for Lotus Notes to Outlook software, and any and all accompanying software, files, data and materials, are distributed and provided AS IS and with no warranties of any kind, whether expressed or implied. In particular, there is no warranty for the quality of data recovered. You acknowledge that good data processing procedure dictates that any program, including Nucleus Kernel, must be thoroughly tested with non-critical data before there is any reliance on it, and you hereby assume the entire risk of all use of the copies of Nucleus Kernel covered by this License. This disclaimer of warranty constitutes an essential part of this License. In addition, in no event does NUCLEUS DATA RECOVERY.COM PRIVATE LIMITED authorize you or anyone else to use Kernel for Lotus Notes to Outlook software in applications or systems where Kernel for Lotus Notes to Outlook failure to perform can reasonably be expected to result in a significant physical injury, or in loss of life. Any such use is entirely at your own risk, and you agree to hold NUCLEUS DATA RECOVERY.COM PRIVATE LIMITED harmless from any and all claims or losses relating to such unauthorized use.

### **General**

This License is the complete statement of the agreement between the parties on the subject matter, and merges and supersedes all other or prior understandings, purchase orders, agreements and arrangements. This License shall be governed by the laws of the State of Delhi. Exclusive jurisdiction and venue for all matters relating to this License shall be in courts and for a located in the State of Delhi, and you consent to such jurisdiction and venue. There are no third party beneficiaries of any promises, obligations or representations made by NUCLEUS DATA RECOVERY.COM PRIVATE LIMITED herein. Any waiver by NUCLEUS DATA RECOVERY.COM PRIVATE LIMITED of any violation of this License by you shall not constitute, nor contribute to, a waiver by NUCLEUS DATA RECOVERY.COM PRIVATE LIMITED of any other or future violation of the same provision, or any other provision, of this License.